

Greater Lincolnshire UK

# A Place to Live, Work and Enjoy







# Contents

---

Contents **03**

---

Welcome to Greater Lincolnshire **04**

---

An Introduction to the Region **05**

---

Greater Lincolnshire Map **06**

---

A Place to Live **07**

---

A Place to Make Home & Prosper **08**

---

A Place to Work **10**

---

A Place to Work: Future-focused Industry Sectors **12**

---

A Place to Work: Home & Flexible Working **18**

---

A Place to Learn **20**

---

A Place to Enjoy **22**

---

A Well-connected Region **24**

---

A Commitment to Sustainability **26**

---

District Profiles **28**

---

Support for Your Relocation **33**

---



# Welcome to Greater Lincolnshire

Greater Lincolnshire is thriving. Our diverse region offers beautiful places to make home and enjoy a superb quality of life. Our major industries are high-growth and future-focused, presenting solid opportunities for career success and future prosperity. And our educational institutions are specialised and high-performing – preparing the next generation for a changing, technology-focused world.

This is a place to work and put down roots, and a well-connected base for commuters and entrepreneurs. It's sustainable and affordable but also dynamic, and it could just be the place for you and your family.

We're delighted to welcome you to Greater Lincolnshire, and invite you to take a closer look at everything our region has to offer.



# An Introduction to the Region

---

**Greater Lincolnshire comprises the eastern part of England's East Midlands. The region extends from the Humber Estuary in the north to Rutland and the Fens in the south, and from the North Sea coast in the east to the fringes of the East Midlands and South Yorkshire conurbations to the west.**

The region's diverse landscape is captured in the phrase 'City, Countryside and Coast'. It encompasses the cathedral city of Lincoln and charming, historic market towns; the beautiful rolling hills of the Wolds and the atmospheric flatlands of the Fens; and a coastline characterised by both vast natural spaces and popular seaside resorts.

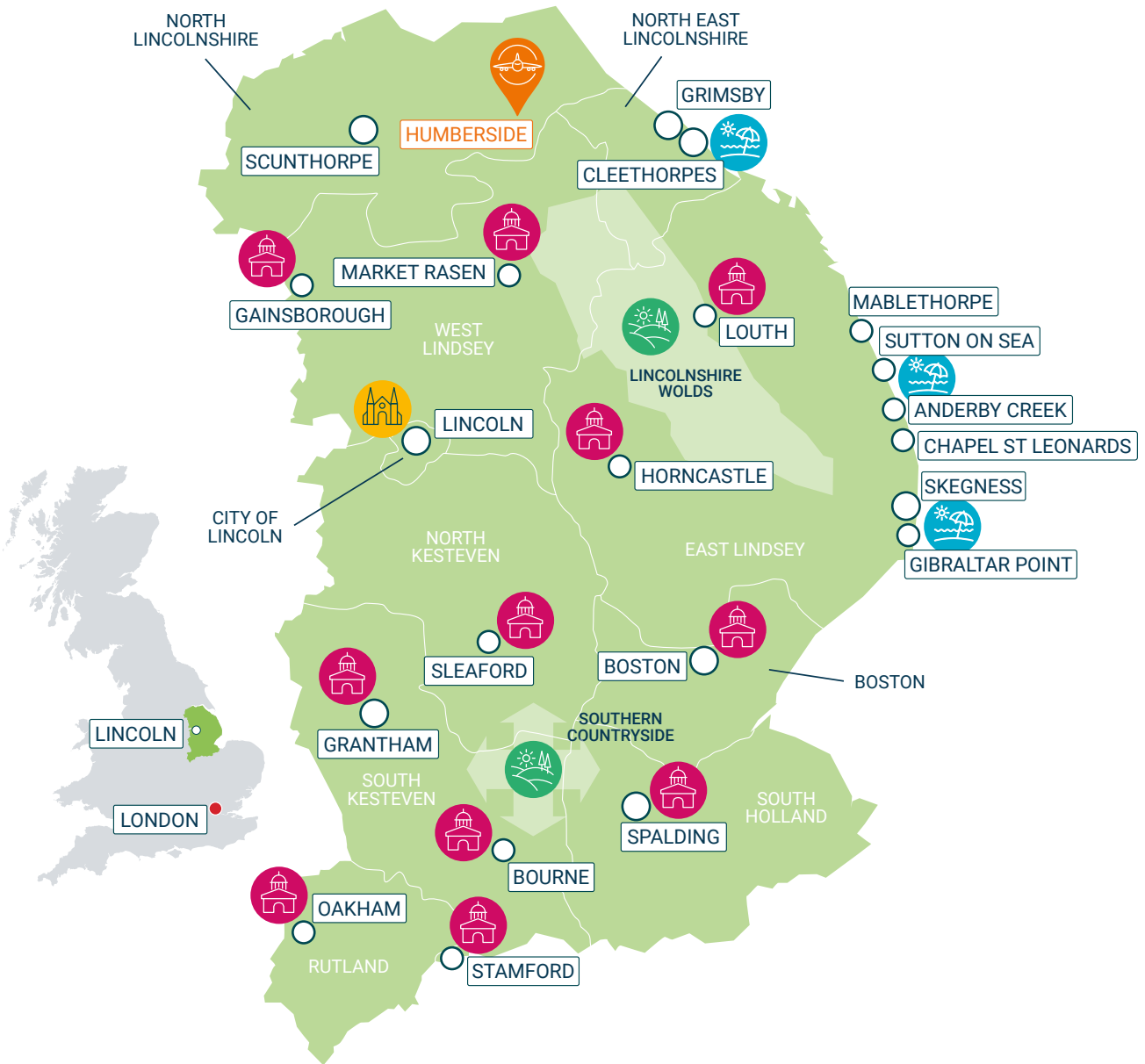
Greater Lincolnshire's geography holds the key to its thriving industries and economic strengths. Flat, rural expanses made the region Britain's breadbasket and the home of the RAF, which in turn gave rise to expertise in agrifood and defence-related technologies. Access to the sea made it a centre for port logistics and trade, and now clean, renewable energy sources. The area's beaches, open spaces and ubiquitous history provided the setting for today's thriving tourism industry.

It's this diverse, engaging landscape that makes Greater Lincolnshire a wonderful place to live and work, and a region full of opportunities.





# Greater Lincolnshire



## Selected Visitor Destinations

-  City
-  Countryside
-  Airport
-  Coast
-  Market Town

# A Place to Live



**Greater Lincolnshire offers a diversity of places to live – cities and towns, countryside and coast – all with one thing in common: the opportunity to enjoy a superb lifestyle.**

The cathedral city of Lincoln and the region's market towns offer delightful surroundings and high-quality amenities – independent boutiques, acclaimed restaurants and cafés, and cultural attractions including heritage buildings, museums and galleries.

Greater Lincolnshire's countryside provides a wealth of history and idyllic settings for active pastimes including walking and cycling. The region's extensive coastline ranges from tranquil

beaches and nature reserves to vibrant seaside resorts – in demand as desirable places to live as well as visit.

Here you can get away from the noise and hustle of big cities and motorways, with all the benefits that implies: more affordable homes and services, less congestion and cleaner air, and easy access to places you usually only visit on holiday. The climate is pleasant too, with temperatures above the national average and some of the UK's lowest levels of rainfall.<sup>1</sup>

But this is a modern, connected region as well as a salubrious one, serving the practical needs of working and building careers, learning and raising families, as well as providing time and space for relaxation and enjoyment.

Source: (1) metoffice.gov.uk – Waddington, Lincs data and regional averages.



# A Place to Make Home, and Prosper

---

**Greater Lincolnshire is committed to providing high-quality, healthy and sustainable housing and communities for residents now and into the future.**



Our region is prospering. High-growth, future-focused industries are creating new, high-quality jobs and the region's population is growing faster than the national average.<sup>1</sup> This creates a need for new housing and communities, and 100,000 new homes are planned across the region by 2031.

All of Greater Lincolnshire's local authorities are committed to supplying housing that is attractive, affordable and sustainable, contributing to an excellent quality of life for the people who live here. Housing in the region already offers significant cost and affordability advantages versus the averages for England.<sup>2,3</sup>

The region's plans include the development of 23 Sustainable Urban Extensions – comprehensively planned new neighbourhoods that are integrated with existing communities and embrace best practice in sustainability. As well as having their own local centres, services and workplaces, these developments will prioritise biodiversity, open space and active travel, including walking and cycling. For their residents, benefits will include easier access to places of work and study, and the opportunity to live healthier, more active, more sustainable lives.<sup>4</sup>





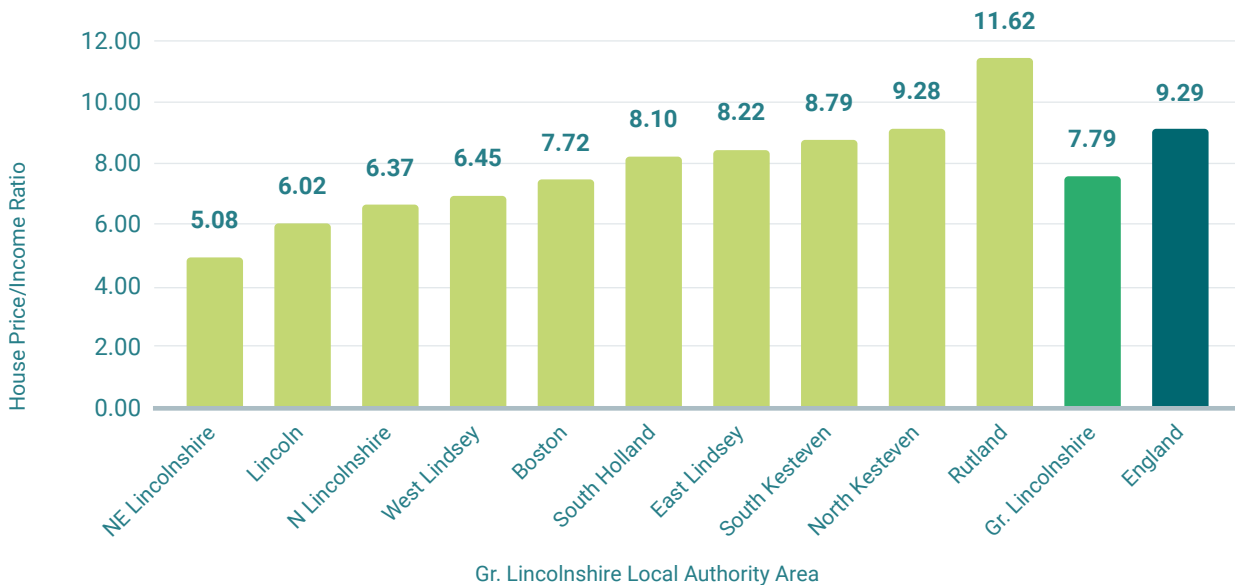
### Average House Price by Greater Lincolnshire District



### Cost-effective housing is available throughout the Greater Lincolnshire area.

At £236,200, the average house price is **£72,000 (or 23%) lower** than the average for England overall. Average house prices are lower than the England average in 9 of Greater Lincolnshire’s 10 districts.<sup>3</sup>

### Housing Affordability by Greater Lincolnshire District



### Housing is more affordable in Greater Lincolnshire than in England overall.

The ratio of average house prices to average incomes in a region shows how affordable housing is for the people who live there. Housing is more affordable than the England average in 9 of Greater Lincolnshire’s 10 districts.<sup>2,3</sup>

# A Place to Work

---

**Greater Lincolnshire is leading the way in the high-growth, technology-driven industry sectors of the future. Advanced capabilities in specialisations including digitalisation, automation and carbon reduction cut across these sector strengths. A diverse, thriving tourism industry is an additional key contributor to the region's economic prosperity.**

Greater Lincolnshire's growing, future-focused industries are creating opportunities for skilled and well-paid employment, career development, and entrepreneurs in a highly dynamic business environment.







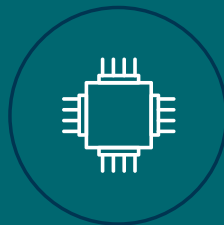
### Low Carbon Energy & Industry

Home to the world's largest offshore wind farm and a pioneering testbed for clean energy generation, storage and distribution.



### Agrifood

At the heart of 'UK Food Valley' and home to Europe's largest agrifood technology, automation and robotics industry cluster.



### Advanced Engineering & Manufacturing

Boosting sustainable growth through the £42 million South Humber Industrial Investment Programme.



### Logistics

Home to the UK's 2nd highest concentration of logistics businesses, and the country's 2nd largest ports complex (by tonnage).



### Defence & Security

The location of choice for defence and security technology innovation, with 40% of the RAF's assets in or near the region.



### Digital Health

At the forefront of digital health innovation through the integration of healthcare expertise and advanced digital technologies.



### Visitor Economy

Attracting more than 25 million visitors in 2021 based on a compelling 'city, countryside and coast' tourism offer.

# Future-focused Industry Sectors



## Low-carbon Energy & Industry

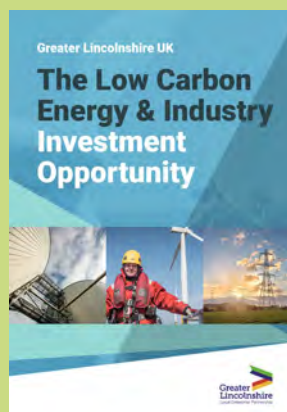
Greater Lincolnshire is at the forefront of the UK's low-carbon energy and industrial sectors, building the sustainable economy of the future and creating skilled, long-term jobs for residents.

The region is home to:

- the world's largest offshore wind operations and maintenance centre, with sector growth driven by large-scale investments from major energy and infrastructure companies.
- the UK's most ambitious project to deliver net zero carbon industry, applying breakthrough technologies including carbon capture, utilisation and storage, and renewable hydrogen.
- specialists in food recycling technologies including anaerobic digestion and sustainable packaging, supporting the area's thriving agrifood sector.
- a fast-growing 'circular economy' sector, with state-of-the-art facilities producing sustainable energy, fuels and recycled products.



**Find out more:** see our [Low-carbon Energy & Industry Prospectus](#)







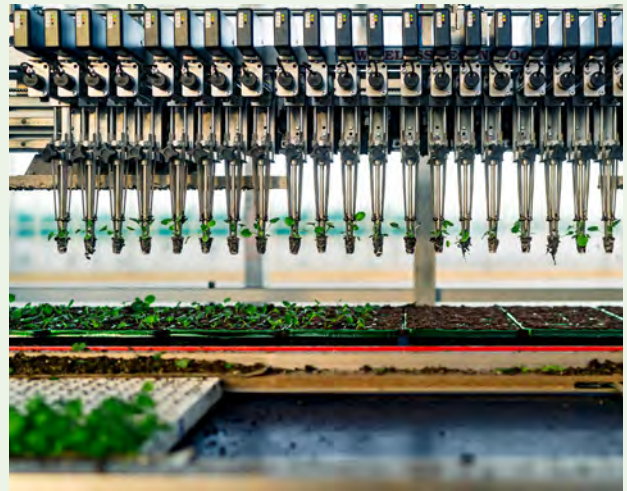
## Agrifood

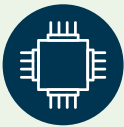
**Greater Lincolnshire is at the heart of the UK's agrifood sector, presenting diverse career opportunities in areas including agriculture, food manufacturing, research and innovation, agritech and food logistics.**

The region is home to:

- major agrifood and agritech businesses, focused on the UK's most important industry hubs for food and seafood manufacturing and logistics.
- Food Enterprise Zones and Freeport sites, attracting large-scale investments and job creation in the sector.
- sector-leading academic and educational institutions including the Lincoln Institute for Agri-Food Technology (University of Lincoln), the National Centre for Food Manufacturing (NCFM), and Riseholme College.
- leading-edge agrifood research, innovation and technologies, in specialist areas including nutrition, sustainability, packaging, and Food Industry 4.0 themes including automation, traceability and security.

**Find out more: see our [Agrifood Prospectus](#)**



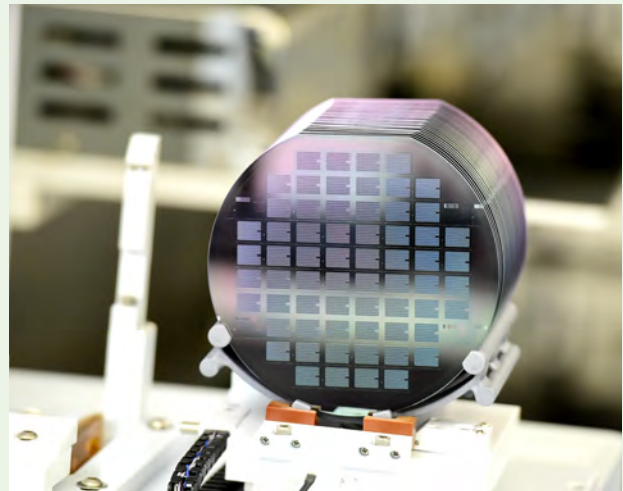


## Advanced Engineering & Manufacturing

**Greater Lincolnshire is one of the UK's outstanding locations for advanced engineering and manufacturing, with major companies serving markets including defence, agriculture, automotive and power systems.**

- In the region, leading engineering and manufacturing businesses are complemented by cutting-edge innovators in 'Industry 4.0' specialisations including AI, machine learning, data analytics and the Internet of Things, supported by expertise within the University of Lincoln.
- This distinctive combination of advanced engineering and digital excellence is future-proofing the sector and creating rewarding opportunities for both business growth and career development.
- The regional sector is represented and supported by the Greater Lincolnshire Engineering and Manufacturing (GLEAM) Network.

**Find out more: see our [Advanced Engineering & Manufacturing Prospectus](#)**







## Logistics

**Greater Lincolnshire's logistics sector is strategically vital for the UK.**

- The ports of Immingham and Grimsby, within the Humber Freeport, comprise the UK's busiest trading gateway. The Port of Boston, in the south east of the region, is an import and expanding agrifoods port.
- As a key centre of agriculture and food manufacturing, the region is home to major food logistics hubs including Spalding and Grimsby.
- Low carbon initiatives across the region are creating career opportunities for logistics professionals in support of sectors including offshore renewables and onshore sustainable energy generation.
- The combination of a highly developed logistics sector with advanced industry 4.0 expertise is establishing the area as a leading centre for logistics digitalisation and automation.
- Major strategic investment locations including Food Enterprise Zones and the Humber Freeport are driving logistics growth and job creation.



**Find out more: see our [Logistics Prospectus](#)**





## Defence & Security

**Greater Lincolnshire's thriving Regional Defence and Security Cluster is built on support for RAF operations and expertise at the University of Lincoln, creating skilled career opportunities in areas including digital and information technologies.**

The region is home to:

- RAF Waddington, near Lincoln – the “hub of UK ISTAR and the main operating base for airborne intelligence aircraft and systems.” (RAF)
- a cluster of major defence and security technology businesses providing operational support to the RAF for ISTAR and digital systems.
- leading-edge research and innovation at the University of Lincoln, in fields including data analytics, digitalisation, Industry 4.0, and the transition to Industry 5.0.
- a growing cluster of defence and security businesses at Lincoln Science & Innovation Park (LSIP), benefiting from co-location with the university.

**Find out more: see our [Defence & Security Prospectus](#)**







## The Visitor Economy

Greater Lincolnshire is home to a thriving tourism sector with strong growth potential. The area is ideally positioned to benefit from recent trends including UK 'staycations', creating opportunities for both entrepreneurs and career growth in the sector.

- Greater Lincolnshire's diversity is at the heart of its attractiveness to visitors, encompassing the City of Lincoln, idyllic market towns, natural coastline, traditional seaside resorts, historic and family attractions, and beautiful rolling countryside.
- For both entrepreneurs and employees in the sector, the growth of the region's visitor economy presents opportunities in areas including visitor accommodation (from hotels and pubs to short-term holidays lets), hospitality (including pubs, restaurants and cafés) and visitor attractions.

**Find out more:** see our [Visitor Economy Prospectus](#)



# Home & Flexible Working

**In the aftermath of the Covid-19 pandemic, improved digital connectivity, the widespread adoption of remote working technologies, and more flexible employers have transformed the way we work. For many people, it is now possible to prioritise lifestyle considerations over access to the office when choosing where to live.**

With its diverse rural, coastal and urban landscapes, combined with low levels of congestion, Greater Lincolnshire has always been a desirable place to live. But now, for more people than ever, it's a viable option too.

In recent years, multi-million pound investments have transformed the region's digital connectivity. In Lincolnshire, 95% of premises now have access to superfast broadband and 8,000 rural premises have ultrafast fixed wireless broadband (with 3,000 more to follow soon).<sup>1</sup> Greater Lincolnshire's goals for the near future are even more ambitious:

95%

Premises with access to superfast broadband<sup>1</sup>

8,000

Rural premises with ultrafast fixed wireless broadband<sup>1</sup>

ultrafast broadband for all (download speeds above 100Mbps), and gigabit-capable broadband access (download speeds above 100Mbps) that surpasses UK Government targets.<sup>2</sup>

And when it is time to go to the office, Greater Lincolnshire is well connected by road and rail. The major business and industrial centres of the East Midlands and Yorkshire are easily accessible, while from the south of the region London can be reached by train in as little as one hour ten minutes.<sup>3</sup>







# A Place to Learn

---

**Greater Lincolnshire offers educational excellence at all levels, from primary schools through to postgraduate studies, in state or independent institutions, with an academic or vocational focus.**



## Higher Education

---

**The University of Lincoln** is one of the UK's newest and fastest growing universities, with a burgeoning reputation for excellence. As well as providing first-class higher education across a broad range of subjects, the university's focus on leading-edge technologies is supporting the region's success in high-growth industries. In 2020, the University of Lincoln achieved an overall ranking of 17th out of 121 UK universities.<sup>1</sup>

[lincoln.ac.uk](http://lincoln.ac.uk)

**Bishop Grosseteste University**, located in Lincoln, is a public university offering a wide range of disciplines as well as long-established expertise in education. Courses range from Foundation Degrees to PhD level.

[bgu.ac.uk](http://bgu.ac.uk)

## Further Education

---

**Further & Higher Education Colleges** across Greater Lincolnshire deliver an extensive range of courses, qualifications and apprenticeships from Level 1 through to postgraduate studies. Preparing students for successful careers in the region's high growth industries is a priority, with specialist centres focused on the needs of sectors including engineering and manufacturing, agrifood and agritech, renewables technologies, logistics and transport, and digital technology.

**Boston College:** [boston.ac.uk](http://boston.ac.uk)

**North Lindsey College:** [northlindsey.ac.uk](http://northlindsey.ac.uk)

**Grimsby Institute:** [grimsby.ac.uk](http://grimsby.ac.uk)

**Riseholme College:** [riseholme.ac.uk](http://riseholme.ac.uk)

**Lincoln College Group:** [lincolncollege.ac.uk](http://lincolncollege.ac.uk)

**University Campus North Lincolnshire:** [ucnl.ac.uk](http://ucnl.ac.uk)





## State Schools

Greater Lincolnshire offers a diverse range of state schools including many high-performing institutions.

**Lincolnshire's Grammar Schools** are non-fee paying selective schools for 11 to 18 year olds. Open to all children who qualify (subject to sufficient places and suitable transport availability) they offer a distinctive academic curriculum and a wide range of educational opportunities.

[grammarschools.lincs.sch.uk](http://grammarschools.lincs.sch.uk)

## Independent Schools

Greater Lincolnshire is home to 19 independent (private) schools located throughout the region. They offer a range of profiles to suit all requirements including primary and secondary, day or boarding, co-educational and single sex, and non-denominational or religion-affiliated. The schools typically offer wide-ranging curriculums and extracurricular activities, high levels of academic achievement and pastoral care, and excellent facilities.

[isc.co.uk/schools](http://isc.co.uk/schools) (under Find a School, search: Lincolnshire, UK; Rutland, UK)

# A Place to Enjoy

Greater Lincolnshire offers a wealth of rewarding leisure activities for residents of all ages.



## Historic Attractions

As a place immersed in history, Greater Lincolnshire is a treasure trove of world-famous heritage and architectural masterpieces. Lincoln's spectacular Gothic cathedral and Norman castle are perhaps the most famous, but they are just the start. The region boasts some of England's most exquisite churches, delightful stately homes, and fascinating Roman ruins, as well as major attractions such as the award-winning International Bomber Command Centre.



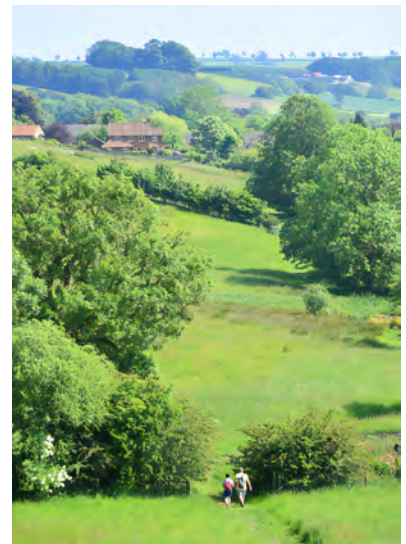
## Family Attractions

Greater Lincolnshire's wide open spaces offer endless opportunities for families to enjoy rural and nature-focused attractions including wildlife parks, zoos, animal sanctuaries and aquariums.



## Countryside

Greater Lincolnshire's beautiful, varied countryside, from the rolling Wolds to the flat expanses of the Fens, provides an idyllic setting for healthy and enriching leisure activities. The area is packed with charming villages and market towns, beauty spots and nature reserves, and walking and cycling routes, with big skies and spectacular views at every turn.







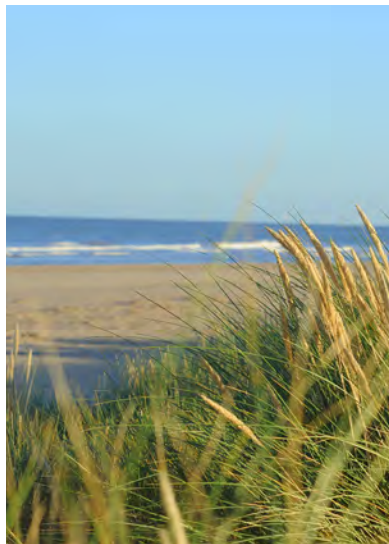
## Seaside

With its traditional coastal resorts, including Mablethorpe, Skegness, Cleethorpes and Sutton-on-Sea, Greater Lincolnshire offers everything we all love about the British seaside. There's entertainment for all the family, from wide sandy beaches to theme parks and aqua parks, and from fish and chips to donkey rides and funfairs. The sea itself opens up a range of exciting, healthy leisure pursuits, including paddle boarding and kite surfing.



## Natural Coast

Greater Lincolnshire's peaceful, pristine Natural Coast includes miles of clean, golden beaches, sand dunes and teeming natural habitats. It's a place for relaxation and contemplation, for walking and cycling, and for nature pursuits like birdwatching and seal spotting, or simply enjoying the landscapes, fauna and wildflowers.



Explore things to do in  
**Greater Lincolnshire** at the  
Visit Lincolnshire website:  
[visitlincolnshire.com](https://www.visitlincolnshire.com)

# A Well-connected Region

Greater Lincolnshire's residents benefit from excellent transport connections – locally, regionally, nationally and internationally, and via multiple modes of transport.

Greater Lincolnshire offers a range of effective and innovative local and regional transport solutions, including:

**Callconnect:** an on-demand bus service linking villages, towns and transport hubs with a flexible booking system.

**Interconnect:** bus services connecting urban centres along key corridors.

**Rail links:** Greater Lincolnshire offers excellent internal rail connections. The region's Community Rail Partnerships are committed to improving local

rail services for the benefit of communities.

**Active travel:** Local Authorities across the region are committed to investments in cycle networks and walkable neighbourhoods.

**Find out more at:**  
[lincsbus.info](https://lincsbus.info) or [nationalrail.co.uk](https://nationalrail.co.uk)

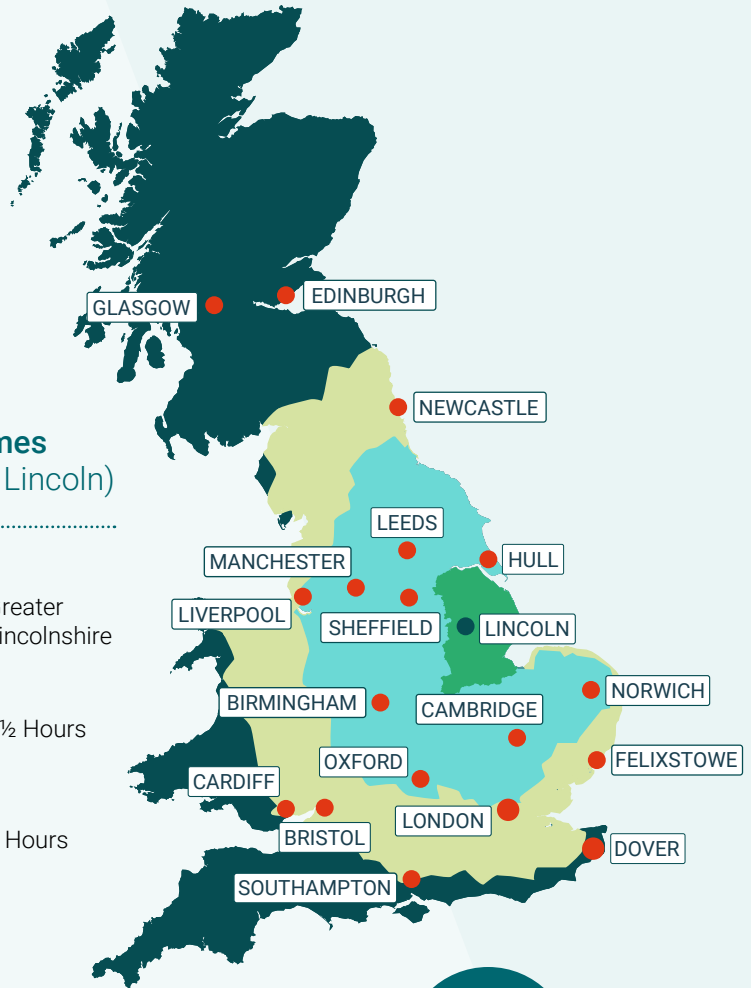
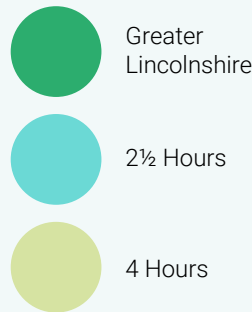




### UK Connectivity

Greater Lincolnshire is a large region offering ideal location solutions for residents requiring fast access to population centres across the UK, including for commuting. The north of the region is ideally positioned for access to the conurbations of Yorkshire and the North, the west for the East and West Midlands, and the south for the south Midlands, London and the South East.

### Drive Times (to/from Lincoln)



### By Road

From Greater Lincolnshire, the major population centres of the Midlands and North of England can be reached within 2 1/2 hours, and London within 2 3/4 hours. More than 75% of the UK's population can be reached within around 3 1/2 hours' drive time.<sup>1</sup>



### By Rail

The UK's major population centres are easily accessible by rail from Greater Lincolnshire. From Lincoln, London can be reached within 2 hours, and Manchester within 2 1/4 hours. From Grantham, in the south of the region, London can be reached in just over 1 hour.<sup>1</sup>



### International Air Connectivity

Within Greater Lincolnshire, Humberside Airport offers frequent 'hub-feeder' services to/from Amsterdam Schiphol (AMS), with connections to/from 800 global destinations with KLM and SkyTeam partners.<sup>2</sup> Airports accessible within 2 hours' drive time include East Midlands, Leeds Bradford and Birmingham.<sup>1</sup>

Sources: (1) Google Maps, 2023; (2) Humberside Airport



# A Commitment to Sustainability

---

**Greater Lincolnshire is a region committed to sustainability – to provide the best possible environment for residents, build thriving low carbon industries, and support the UK’s Net Zero goals.**

Local authorities across the region are working hard to promote and encourage sustainability. Greater Lincolnshire’s councils have made firm commitments in key areas including waste reduction, maximising energy efficiency, and encouraging low carbon and active forms of transport wherever possible.<sup>1</sup>

Lincolnshire’s Transport Plan (LTP5) is an important part of this work. The plan specifies significant investments to improve cycle and walking routes, provide extra rail services to London, develop additional electric vehicle infrastructure, and improve local bus services.<sup>2</sup>

Greater Lincolnshire’s business community is at the forefront of the UK’s transition to a sustainable, Net Zero economy. World-leading initiatives on the Humber are delivering low carbon energy, industrial decarbonisation, and highly innovative recycling technologies. Meanwhile, companies in the region’s agrifood sector are leading the way in food recycling and sustainable food packaging.

Source: (1) E.g. Lincolnshire County Council – Green Masterplan; (2) Lincolnshire Transport Plan (LTP5).





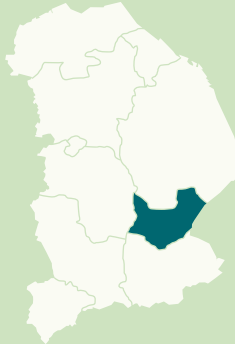




# District Profiles

## Boston

Located in the south east of the region, the Borough of Boston is characterised by a thriving inland port, historic villages, and the atmospheric Fens countryside.



The area's focal point is the market town and inland port of Boston, known for its attractive waterways and historic buildings, and for being home to the largest church in England – St Botolph's, known as the Boston Stump. Historically, the town is famous for its connection to the Pilgrim Fathers, the founding fathers of America.

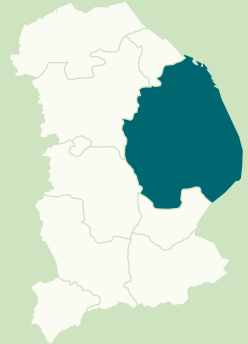
Boston is a strategically important centre for the agrifoods industry, encompassing agriculture, food manufacturing, logistics and agricultural equipment manufacturing.

The port of Boston is an important and expanding agrifoods port. An ambitious Food Port project, including a dedicated Centre for Food and Fresh Produce Logistics, is projected to deliver significant growth and employment opportunities.



## East Lindsey

Located in the east of the region, East Lindsey is a diverse district encompassing the Lincolnshire Wolds Area of Outstanding Natural Beauty, most of Lincolnshire's coastline and, in the south, parts of the flat Lincolnshire Fens.



The Lincolnshire Wolds are known for their idyllic villages, market towns and rolling green hills. The area's coastline includes both famous, traditional seaside resorts, like Mablethorpe and Skegness, and the county's Natural Coast, with its long unspoilt beaches, sand dunes and nature reserves.

As a predominantly rural district, East Lindsey is one of the UK's leading centres of agriculture. Other significant growth and employment-creating sectors include machinery and equipment manufacturing, and the visitor economy.





## Lincoln



**As well as being one of England's most beautiful cathedral cities, Lincoln is an important and growing center for commerce, higher education and technology-focused industries.**

Attractions in the city's historic centre include Lincoln Cathedral, one of the world's most spectacular gothic buildings, and the Norman Lincoln Castle. As the region's commercial centre, the city offers a variety of independent shops, places to eat, and cultural assets including museums, libraries and galleries.

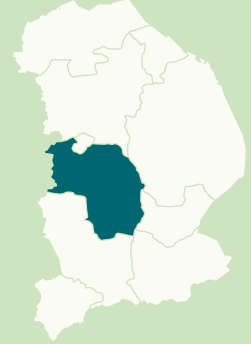
The city is recognised for offering an excellent quality of life. In the Legatum Institute's latest UK Prosperity Index of 379 UK local authority areas (2021), Lincoln ranks in the top 20% of locations for Living Conditions.<sup>1</sup>

Lincoln is at the heart of the region's thriving advanced engineering and manufacturing sector, hosting major defence, electronics and power generation technology businesses. Benefiting from world-class expertise in the University of Lincoln, the city is also at the forefront of digital technology innovation, encompassing big data analytics, AI, robotics and the Internet of Things.



Source: (1) [www.prosperity.com](http://www.prosperity.com).

## North Kesteven



**Located south of Lincoln, in the west of Lincolnshire, North Kesteven is a primarily rural district characterised by beautiful, wide-open countryside, picturesque villages and impressive cultural landmarks. The area is home to a thriving agrifood industry sector and a rich aviation heritage.**

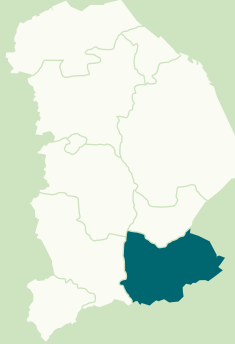
North Kesteven's flourishing communities benefit from low crime levels and rank highly for a superb quality of life.<sup>1</sup> The district's largest settlements, Sleaford and North Hykeham, are the powerhouses of the local economy, offering excellent employment opportunities and high-quality, sought after educational establishments.

Agriculture, food manufacturing and engineering are mainstays of the North Kesteven economy. The construction sector is also key, supporting the delivery of ambitious housing and infrastructure. With three RAF bases, including officer and aircrew training and selection, the district is central to the region's defence cluster, supporting cutting-edge digital technology businesses and a highly skilled sector workforce. The district offers excellent transport links to the A1 and M1, the East Midlands road network, and the East Coast Mainline.



## South Holland

**South Holland is at the heart of Lincolnshire's low-lying, ecologically diverse Fenlands, and the UK's abundant 'Food Valley'. The area is centred on the attractive market town of Spalding, famous for its tulips, the picturesque River Welland, and a rich history extending back to Roman times.**



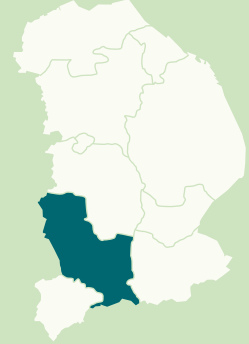
The area is at the forefront of the UK's agrifood and horticulture sectors, and home to successful businesses throughout their supply chains - in agriculture, food processing, equipment manufacturing and logistics. Spalding is the UK's largest food logistics hub with activities encompassing food manufacturing and distribution. The recently reopened port at Sutton Bridge, with direct access to the A17, is already seeing the import and export of various commodities. Growth initiatives including the South Lincolnshire Food Enterprise Zone, in Holbeach, are creating business expansion and career opportunities in knowledge-focused areas including agritech and food manufacturing R&D.

In the Legatum Institute's latest UK Prosperity Index of 379 UK local authority areas (2021), South Holland ranks in the top 20% for Social Capital – a key indicator of quality of life.<sup>1</sup>



## South Kesteven

**South Kesteven is a rural district at the heart of southern Lincolnshire's beautiful countryside. The area includes the picturesque market towns of Bourne, Grantham and Stamford, The Deepings, and an array of charming rural villages.**



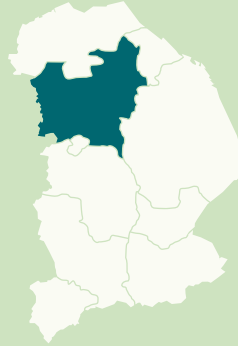
With London accessible by rail in just over one hour from Grantham, and Midlands cities including Nottingham and Leicester close by, the area presents opportunities to combine a superb quality of life – including access to 365 square miles of rural splendour – with comfortable commuting or flexible working.

South Kesteven's excellent quality of life has been recognised in respected studies and rankings. In 2021, The Times named Stamford as 'the best place to live in the Midlands'.<sup>2</sup> In the Legatum Institute's latest UK Prosperity Index of 379 UK local authority areas (2021), South Kesteven ranks in the top 20% for Social Capital – a key indicator of quality of life – and in the top 30% for Living Conditions.<sup>1</sup>



## West Lindsey

**West Lindsey is a rural district encompassing the historic market towns of Gainsborough, Market Rasen and Caistor, and the natural beauty of the northern Lincolnshire Wolds.**



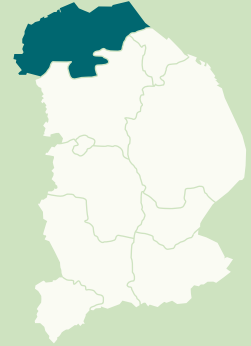
Gainsborough is experiencing significant urban regeneration. Located at the gateway to central Lincolnshire from the Sheffield City Region and Nottinghamshire, and with proximity to the planned STEP Fusion development at West Burton (a prototype fusion power plant), the town is strategically positioned at the western edge of the STEP/A15 Corridor of Opportunity.

Supported by infrastructure investments in transport, digital and utility connectivity, the Corridor incorporates the Central Lincolnshire Food Enterprise Zone (FEZ), the emerging Agricultural Growth Zone (north of Lincoln), and developments in key sectors including energy, agri-tech, defence, space, communications, aeronautics and robotics. The district's future growth, decarbonisation and circular economy will also be driven by traditionally strong sectors including agriculture, the visitor economy and manufacturing, as well as emerging creative and lifestyle clusters.



## North Lincolnshire

**North Lincolnshire's diverse landscape encompasses energy-intensive industries along the Humber Energy Estuary's south bank, charming market towns, and picturesque villages in unspoiled rural settings.**



The area is home to strategically important national assets: refineries, an integrated steelworks, power plants and the largest remaining undeveloped site fronting a deep-water estuary for the renewables sector. Offering tax incentives within the Humber Freeport area, North Lincolnshire is a key growth pole in the UK's energy system.

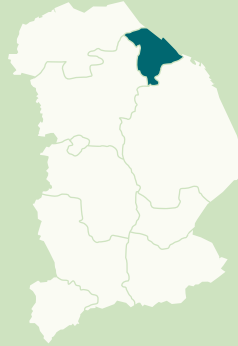
The area is at the forefront of industrial decarbonisation through world-leading initiatives encompassing carbon capture utilisation and storage, and hydrogen technologies. The focus on innovation extends into other industries including vertical farming and packaging, and there are plans to develop a 65-acre Advanced Manufacturing Park.

With access to UK and global markets through the area's rail and motorway networks, ports and airport, North Lincolnshire is creating business expansion opportunities and skilled, future-focused jobs aligned with net-zero ambitions.





## North East Lincolnshire



Located in the north east of the region, North East Lincolnshire is home to a diverse industrial economy, the popular seaside resort of Cleethorpes, and idyllic countryside on the fringes of the Lincolnshire Wolds.

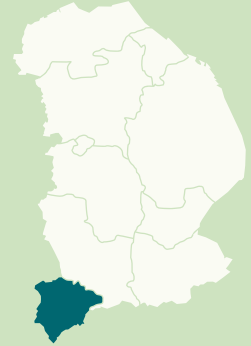
The area's thriving industries are intrinsically linked to its Humber Energy Estuary and Freeport location. The ports of Immingham and Grimsby comprise the UK's busiest trading gateway, and Grimsby is the booming operations hub at the heart of the UK's offshore renewables sector. North East Lincolnshire leads the way in the UK's transition to net zero carbon, with energy generators and industry engaged in ground-breaking decarbonisation and sustainability initiatives, as well as being a UK-leading food manufacturing and logistics hub.

The area excels in education. In 2021-22, 90% of rated schools in the area achieved OFSTED ratings of Outstanding or Good, versus 87% nationally.<sup>1</sup>

This combination of established strengths and new, low carbon-focused investments is transforming the area's economy, creating skilled career opportunities across a range of sectors.



## Rutland



Located in the south west of the region, Rutland is England's smallest county and amongst its prettiest. The area offers charming villages, historic market towns with upmarket boutiques and dining, and a multitude of leisure and nature pursuits at Rutland Water.

Rutland is a prosperous county that has gained wide recognition for its superb quality of life. In 2023, the Sunday Times named it one of the best places to live in the UK, highlighting 'a large choice of perfect property'.<sup>2</sup> In the Legatum Institute's latest UK Prosperity Index of 379 UK local authority areas (2021), Rutland ranks 14th overall, 12th for Safety and Security, in the top 10% for both Education and Living Conditions, and in the top 15% for Health.<sup>3</sup>

The county also performs very highly in educational attainment. In 2021-22, 100% of rated schools in Rutland achieved Ofsted ratings of Outstanding or Good (vs. 87% nationally). In 2022, Rutland achieved England's highest percentage of A-level exam grades at C or above, and England's highest percentage of GCSE exam grades at 4 (C equivalent) or above.<sup>1</sup>







## Contact Us

The Inward Investment Team  
e: [investment@lincolnshire.gov.uk](mailto:investment@lincolnshire.gov.uk)

## Address:

Invest Lincolnshire  
Lincolnshire County Council  
Lancaster House  
36 Orchard Street  
Lincoln, LN1 1XX





served by One Team

